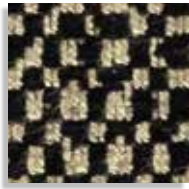


COLLEZIONE SUPER



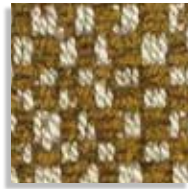
LI 575_06



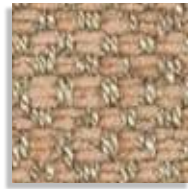
LI 575_04



LI 575_01



LI 575_12

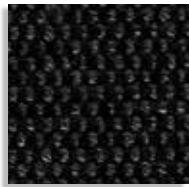


LI 575_15

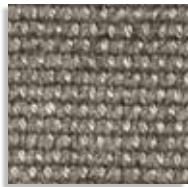


LI 575_03

QUADRETTO



LI 569_21



LI 569_02



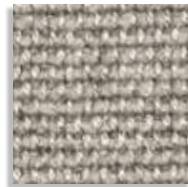
LI 569_01



LI 569_18



LI 569_09



LI 569_15

UNITO



LI 569_17

QUADRETTO



Composizione: 51% VI - 23% CO - 16% PL - 10% LI
H.: 138/140 cm. - Peso gr./ml. 1050

UNITO



Composizione: 39% VI - 35% CO - 16% PL - 10% LI
H.: 138/140 cm. - Peso gr./ml. 980

NOTE:

Super LI 575 è consigliato per cuscini arredo, pouff, poltrone e poltroncine.