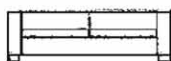


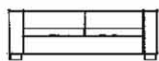


Struttura in legno, con imbottitura in poliuretano espanso e dacron; schienale a corpo unico e cuscini seduta in espanso. Componibilità angolare con elementi dormeuse fisse o apribili con contenitore (meccanismo con rete alzabile). Diventa trasformabile letto; seduta con cinghie elastiche. Massima praticità del meccanismo che permette di non dover togliere i cuscini del divano. Rete ortopedica di tipo elettrosaldata, compresa di materasso in espanso (circa h. 12/13cm.). Rivestimento sfoderabile. Piedini legno (Vedi tabella piedini)

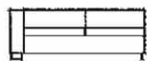
Wooden structure upholstered with polyurethane foam and Dacron; single-body backrest and foam-padded seating cushions. Modular, angular daybed elements that may be fixed or removable with underlying storage space (adjustable bedspring mechanism). Convertible bed; seating with elastic straps. This highly-practical mechanism means the sofa cushions need not be removed. The electrowelded, orthopedic bedspring comes with 12/13cm-thick foam mattress. Removable cover. Wooden feet.



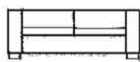
215



220



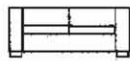
200



200



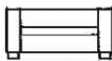
180



180



160



160



140



100

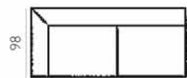


80

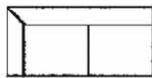
Versione trasformabile



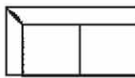
230



225



210



190



A richiesta dormeuse con contenitore (rete alzabile sul lato lungo)